



PRODUCT CATALOG

**We deliver your orders
quickly and reliably.**





CETSA GROUP



As Cetsa group, we have been operating in the service sector for more than 20 years. Together with all our stakeholders and employees, we have aimed to deliver the best quality service to our valued customers in the most accurate way. We have grown together with our customers by setting new targets for ourselves every period. At the point we have reached today, we have reached the level we want regarding our corporate identity and we have focused on our R & D activities in order to become better.

In order to position ourselves in the most accurate way in the future, we have established many infrastructure systems in the software field, especially e-commerce systems. Our quality products with reasonable price policy not only in the cities that we serve all of Turkey and aimed to spread all over the world.

We know that; Every work done without sacrificing quality is directly proportional to success!

KITCHEN CLEANING PRODUCTS

| | |
|---|----|
| HAND DISHWASHING DETERGENT | 6 |
| HAND DISHWASHING DETERGENT PROFESSIONEL | 6 |
| HEAVY DUTY DEGREASER CLEANER | 8 |
| OVEN FRYER DEGREASER | 8 |
| STAINLESS STEEL POLISHER | 10 |
| PROTEIN REMOVER PRELIMINARY | 10 |
| PROCELAIN METAL SCRATCH REMOVER | 12 |
| INDUSTRIAL DISHWASHER DETERGENT | 12 |
| INDUSTRIAL DISHWASHER DETERGENT | 13 |
| INDUSTRIAL DISHWASHER RINSE | 13 |
| INDUSTRIAL DISHWASHER RINSE | 14 |
| INDUSTRIAL DISHWASHER LIMESCALE REMOVER | 14 |

GENERAL CLEANING PRODUCTS

| | |
|--|----|
| ROOM SMELL | 16 |
| PERFUME SURFACE CLEANER | 16 |
| SURFACE CLEANER FOR VENDING MACHINES | 18 |
| WOOD FLOOR CLEANER | 18 |
| BATHROOM SHOWER TUB AND FAUCET CLEANER | 20 |
| WC & BATHROOM CLEANER DENSE | 20 |
| CREAM CLEANING DETERGENT | 22 |
| GLASS AND WINDOW CLEANER | 22 |
| MULTI-PURPOSE CLEANER | 24 |
| CARPET SHAMPOO FOAM | 24 |
| CARPET SHAMPOO WITHOUT FOAM | 25 |
| CARPET SHAMPOO DRY FOAM | 25 |
| LIME AND RUST REMOVER | 26 |
| STAIN REMOVER FOR CARPET | 26 |
| BLEACH | 27 |
| DENSE BLEACH | 27 |

PERSONEL CARE PRODUCTS

| | |
|-------------------------|----|
| SHOWER GEL | 30 |
| CREAMY LIQUID HAND SOAP | 30 |
| FOAM LIQUID HAND SOAP | 32 |
| CREAMY HAIR SHAMPOO | 32 |

LAUNDRY CLEANING PRODUCTS

| | |
|--|----|
| LIQUID LAUNDRY DETERGENT FOR COLOR WITH ENZYME | 34 |
| LIQUID LAUNDRY DETERGENT GENERAL USE WITH ENZYME | 34 |
| FABRIC SOFTNER | 36 |
| ROOM AND LAUNDRY PERFUME | 36 |

CAR CARE PRODUCT

| | |
|-----------------------------|----|
| BRUSHLESS CAR WASH | 38 |
| POLISHED BRUSHLESS CAR WASH | 38 |

MARKET PRODUCTS

| | |
|--|----|
| LIQUID LAUNDRY DETERGENT | 40 |
| LIQUID LAUNDRY DETERGENT | 40 |
| FABRIC SOFTENER | 40 |
| GENERAL CLEANER | 40 |
| GLASS AND WINDOW SURFACE CLEANER | 41 |
| BATHROOM SHOWER TUB AND FAUCET CLEANER | 41 |
| OVEN AND GRILL CLEANER | 41 |
| DEGREASER CLEANER | 41 |
| WC & BATHROOM CLEANER DENSE | 42 |
| DISHWASHING | 42 |
| ALL PURPOSE CLEANER | 42 |
| ULTRA BLEACH | 42 |

KITCHEN CLEANING PRODUCTS





HAND DISHWASHING DETERGENT

Properties:

- It shows the highest performance in a small amount of use.
- A perfect balance between efficient cleaning and economy includes.
- It is suitable for skin pH.
- It is Fragrant.

| Volume (L) | 20 | 10 | 5 | 5 |
|--------------------|--------------|--------------|----------------|----------------|
| Weight (kg) | 20,42 | 10,21 | 5,105 | 5,105 |
| Pcs-Box | 1 | 1 | 4 | 2 |
| Product Code | | | | |
| Lemon Scents | KC-101-TL-20 | KC-101-TL-10 | KC-101-TL-05*4 | KC-101-TL-05*2 |
| Pomegranate Scents | KC-101-TP-20 | KC-101-TP-10 | KC-101-TP-05*4 | KC-101-TP-05*2 |
| Grape Scents | KC-101-TG-20 | KC-101-TG-10 | KC-101-TG-05*4 | KC-101-TG-05*2 |
| Apple Scents | KC-101-TA-20 | KC-101-TA-10 | KC-101-TA-05*4 | KC-101-TA-05*2 |



HAND DISHWASHING DETERGENT PROFESSIONEL

Properties:

- It is a foamy hand dishwashing detergent.
- It is a product with high active substance content, even a small amount of it can wash the dishes. enough for cleaning.
- Protects hands and softness thanks to its enriched formula. gives.
- Suitable for skin pH
- It is Fragrant.

| Volume (L) | 20 | 10 | 5 | 5 |
|--------------------|--------------|--------------|----------------|----------------|
| Weight (kg) | 20,42 | 10,21 | 5,105 | 5,105 |
| Pcs-Box | 1 | 1 | 4 | 2 |
| Product Code | | | | |
| Lemon Scents | KC-101-PL-20 | KC-101-PL-10 | KC-101-PL-05*4 | KC-101-PL-05*2 |
| Pomegranate Scents | KC-101-PP-20 | KC-101-PP-10 | KC-101-PP-05*4 | KC-101-PP-05*2 |
| Grape Scents | KC-101-PG-20 | KC-101-PG-10 | KC-101-PG-05*4 | KC-101-PG-05*2 |
| Apple Scents | KC-101-PA-20 | KC-101-PA-10 | KC-101-PA-05*4 | KC-101-PA-05*2 |





Exceptional Cleanliness !



HEAVY DUTY DEGREASER CLEANER

Properties:

- Burnt in kitchen equipment such as stove, oven, hood
It is used for cleaning the stuck oil layers.
- It adheres perfectly to vertical surfaces.
- It penetrates deeply into the oily residue on the surface.
- It can be easily rinsed from the applied surface.
- Suitable for stainless steel surfaces.
- Does not damage kitchen equipment.

| | | |
|--------------|------------|------------|
| Volume (L) | 5 | 5 |
| Weight (kg) | 5,285 | 5,285 |
| Pcs-Box | 4 | 2 |
| Product Code | KC-102-5*4 | KC-102-5*2 |



OVEN FRYER DEGREASER

Properties:

- Burnt and blackened over time in kitchen equipment
It is an alkaline cleaner used for cleaning oil residues.
- Also suitable for stainless steel materials.
- It can be used with boiling and dipping methods.
- It can be easily rinsed from the applied surface.

| | | | |
|--------------|-----------|------------|------------|
| Volume (L) | 20 | 5 | 5 |
| Weight (kg) | 20,14 | 5,285 | 5,285 |
| Pcs-Box | 1 | 4 | 2 |
| Product Code | KC-103-20 | KC-103-5*4 | KC-103-5*2 |





Unchangeable Radiance !



STAINLESS STEEL POLISHER

Properties:

- Ideal for polishing and maintaining stainless steel surfaces.
- It cares, polishes and protects in one step.
- Fingerprints, stains, color fluctuations, traces such as fog on the surface and removes stains quickly and easily.
- It polishes without scratching.
- The preservatives in it can prevent the surface from getting dirty again and leaving a trace. prevents its formation.
- It prevents oxidation and delays discoloration.

| | | |
|--------------|----------|----------|
| Volume (L) | 5 | 5 |
| Weight (kg) | 5,285 | 5,285 |
| Pcs-Box | 4 | 2 |
| Product Code | KC-104*4 | KC-104*2 |



PROTEIN REMOVER PRELIMINARY

Properties:

- Sticky and dried tea, coffee, fruit on kitchen equipment It is used for cleaning water stains and starch residues.
- Safe on porcelain, glass, ceramic and stainless steel items. available.
- It has disinfecting properties thanks to the chlorine it contains.
- It can be used with dosing pump in industrial dishwashers.

| | | |
|--------------|----------|----------|
| Volume (L) | 5 | 5 |
| Weight (kg) | 5,285 | 5,285 |
| Pcs-Box | 4 | 2 |
| Product Code | KC-105*4 | KC-105*2 |





Tremendous Brightness !



PROCELAIN METAL SCRATCH REMOVER

Properties:

- Do not use metal cutlery on porcelain plates, spoons the black scratches left on the porcelain cups. used for elimination.
- With the dipping method, these scratches are easily and completely removed.
- Porcelain gains a clean and new appearance.
- Absolutely no contact with stainless steel and other metal surfaces should not be carried.

| | | |
|--------------|----------|----------|
| Volume (L) | 5 | 5 |
| Weight (kg) | 5,285 | 5,285 |
| Pcs-Box | 4 | 2 |
| Product Code | KC-109*4 | KC-109*2 |



INDUSTRIAL DISHWASHER DETERGENT FOR HAİGH WATER

Properties:

- Dissolves frozen oil and dirt thanks to the active substances it contains,
- It ensures the best cleaning of the dishes.
- Effective in hard and very hard waters.
- Prevents limescale accumulation.
- With dosing pumps connected to industrial dishwashers used

| | | |
|--------------|------------|------------|
| Volume (L) | 20 | 10 |
| Weight (kg) | 22,28 | 11,14 |
| Pcs-Box | 1 | 1 |
| Product Code | KC-106-G20 | KC-106-G10 |





INDUSTRIAL DISHWASHER DETERGENT

Properties:

- Cleaning the dishes by removing the grease and dirt from the dishes. provides.
- Prevents limescale accumulation.
- With dosing pumps connected to industrial dishwashers used.
- It is suitable for use in soft and medium hard waters.

| | | |
|--------------|------------|------------|
| Volume (L) | 20 | 10 |
| Weight (kg) | 22,28 | 11,14 |
| Pcs-Box | 1 | 1 |
| Product Code | KC-106-P20 | KC-106-P10 |

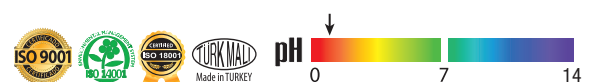


INDUSTRIAL DISHWASHER RINSE FOR HIGH WATER

Properties:

- For use in industrial dishwashers
- It is a high performance rinse aid designed for
- Superior rinsing in cases where the standard product is insufficient provides performance.
 - When working with very hard, carbonated, silicate, salty waters can be used safely.
 - It provides spotless drying of the washed dishes, especially glasses Ideal for washing machines.
 - With dosing pumps connected to industrial dishwashers used.

| | | |
|--------------|------------|------------|
| Volume (L) | 20 | 10 |
| Weight (kg) | 22,28 | 11,14 |
| Pcs-Box | 1 | 1 |
| Product Code | KC-107-G20 | KC-107-G10 |



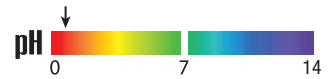


INDUSTRIAL DISHWASHER RINSE

Properties:

- Thanks to the surfactants it contains, it allows the cleaned dishes to dry spotlessly.
- Drops and water stains by running water over the dishes, it prevents residue and provides shine on the dishes.
- With dosing pumps connected to industrial dishwashers used.

| | | | | |
|--------------|------------|------------|-------------|-------------|
| Volume (L) | 20 | 10 | 5 | 5 |
| Weight (kg) | 20,16 | 10,08 | 5,04 | 5,04 |
| Pcs-Box | 1 | 1 | 4 | 2 |
| Product Code | KC-107-P20 | KC-107-P10 | KC-107-P5*4 | KC-107-P5*2 |

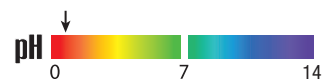


INDUSTRIAL DISHWASHER LIMESCALE REMOVER

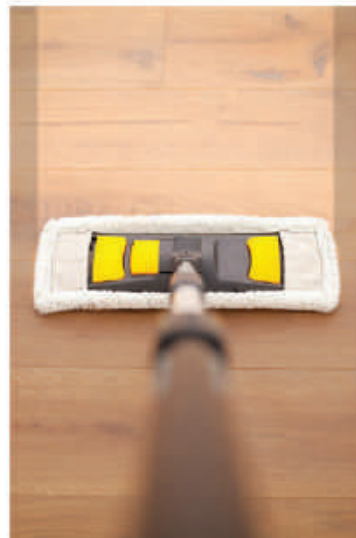
Properties:

- Inner surfaces of dishwasher, tea kettle and bain-maries. It is used to clean lime deposits.
- Provides fast and effective cleaning with its superior formula.
- It is effective even at low dosage.
- It is also effective in cold water.

| | | |
|--------------|----------|----------|
| Volume (L) | 5 | 5 |
| Weight (kg) | 5,14 | 5,14 |
| Pcs-Box | 4 | 2 |
| Product Code | KC-108*4 | KC-108*2 |



GENERAL CLEANING PRODUCTS





ROOM SMELL

Properties:

- By spraying directly on textile surfaces applicable.
- It is used to remove irritating odors.
- It leaves a permanent, pleasant and fresh scent in the environments where it is applied.

| | | |
|---------------------|--------------|--------------|
| Volume (L) | 5 | 5 |
| Weight (kg) | 4,77 | 4,77 |
| Pcs-Box | 4 | 2 |
| Product Code | | |
| Lavander Scents | GC-302-LV5*4 | GC-302-LV5*2 |
| Chasmire Scents | GC-302-C5*4 | GC-302-C5*2 |
| Legend Scents | GC-302-LG5*4 | GC-302-LG5*2 |
| Spring Scents | GC-302-S5*4 | GC-302-S5*2 |



PERFUME GENERAL SURFACE CLEANER

Properties:

- In the cleaning of all washable and water-resistant surfaces it is effective.
- Provides hygiene on the applied surfaces.
- It provides hygiene in shower heads, especially in sanitary areas.
- It provides cleaning without leaving any traces.
- Economical use thanks to the automatic dilution apparatus provides.
- It is fragrant.

| | | | | |
|---------------------|------------|------------|-------------|-------------|
| Volume (L) | 20 | 10 | 5 | 5 |
| Weight (kg) | 19,88 | 9,94 | 4,97 | 4,97 |
| Pcs-Box | 1 | 1 | 4 | 2 |
| Product Code | | | | |
| Lavander | GC-301-L20 | GC-301-L10 | GC-301-L5*4 | GC-301-L5*2 |
| White Soap | GC-301-W20 | GC-301-W10 | GC-301-W5*4 | GC-301-W5*2 |
| Pure | GC-301-P20 | GC-301-P10 | GC-301-P5*4 | GC-301-P5*2 |





Spring Freshness !



SURFACE CLEANER FOR VENDING MACHINES

Properties:

- It is used for cleaning all water-resistant surfaces.
- It has effective cleaning power thanks to the active substances it contains.
- It is neutral.
- It can be used safely in vending machines due to its low foam.

| | | | |
|--------------|-----------|------------|------------|
| Volume (L) | 20 | 5 | 5 |
| Weight (kg) | 20 | 5 | 5 |
| Pcs-Box | 1 | 4 | 2 |
| Product Code | GC-303-20 | GC-303-5*4 | GC-303-5*2 |



WOOD FLOOR CLEANER

Properties:

- For floors sensitive to water such as parquet and laminate. It is a cleaning and care product.
- Extends the life of floors.

| | | |
|---------------------|-------------|-------------|
| Volume (L) | 5 | 5 |
| Weight (kg) | 5 | 5 |
| Pcs-Box | 4 | 2 |
| Product Code | | |
| Lemon Scent | GC-305-L5*4 | GC-305-L5*2 |
| Floral Scent | GC-305-F5*4 | GC-305-F5*2 |





AGAINST STUBBORN DIRT !



BATHROOM SHOWER TUB AND FAUCET CLEANER

Properties:

- Lime residues in water and acid resistant sanitary areas
It is used in cleaning and provides a hygienic effect.
- It is fragrant.
- Daily cleaning of ceramic and plastic parts of toilet bowls provides outstanding success.

| | | | |
|--------------|-----------|------------|------------|
| Volume (L) | 20 | 5 | 5 |
| Weight (kg) | 20,5 | 5,225 | 5,225 |
| Pcs-Box | 1 | 4 | 2 |
| Product Code | GC-310-20 | GC-310-5*4 | GC-310-5*2 |

Scents:

- Floral



WC & BATHROOM CLEANER DENSE

Properties:

- It can be used in all WCs, urinals and bidets.
- For cleaning residues such as ureastone and lime with its dense consistency.
it is effective.
- Designed for easy, fast, direct and safe application
It has a useful slant head.
- It has a profound effect; recesses and protrusions on surfaces
It reaches up to the surface and provides hygienic cleaning.

| | | | |
|--------------|-----------|------------|------------|
| Volume (L) | 20 | 5 | 5 |
| Weight (kg) | 20,5 | 5,225 | 5,225 |
| Pcs-Box | 1 | 4 | 2 |
| Product Code | GC-309-20 | GC-309-5*4 | GC-309-5*2 |

Scents:

- Pine





GLOWING GLAS !



CREAM CLEANING DETERGENT

Properties:

- Water resistant including sanitary areas and food preparation areas. It is used for cleaning all surfaces.
- Effectively cleans surfaces thanks to the natural calcite it contains, dissolves stubborn dirt.
- It should be shaken before use.

| | |
|--------------|--------|
| Volume (L) | 7 |
| Weight (kg) | 9,016 |
| Pcs-Box | 1 |
| Product Code | GC-311 |



GLASS AND WINDOW CLEANER

Properties:

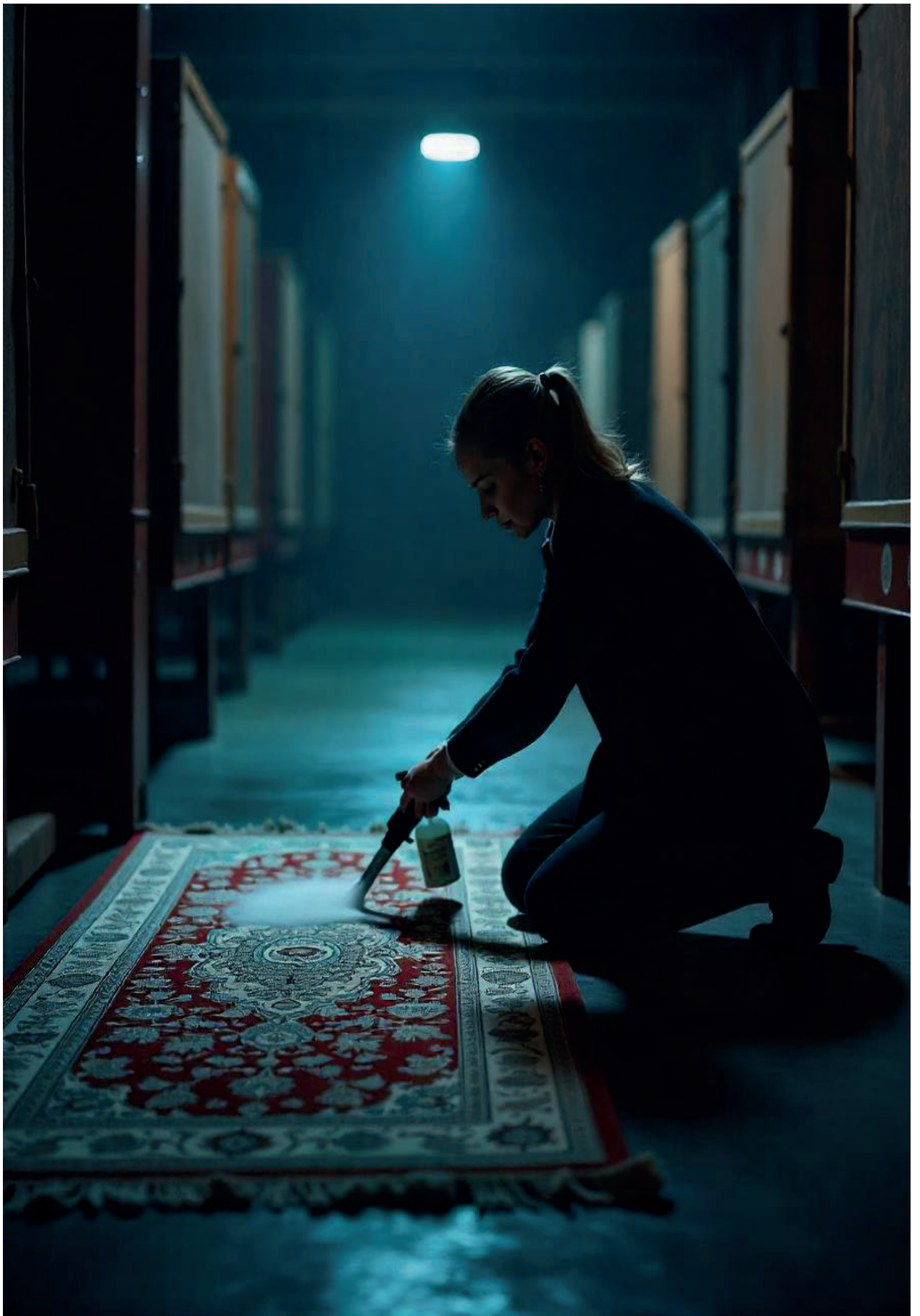
- It is used for cleaning glossy surfaces such as glass and mirrors.
- All finger formed on glossy surfaces indoors and outdoors. It removes traces, greasy dirt and nicotine film.
- It leaves a pleasant and fresh scent.

| | | |
|--------------|----------|----------|
| Volume (L) | 5 | 5 |
| Weight (kg) | 4,965 | 4,965 |
| Pcs-Box | 4 | 2 |
| Product Code | GC-304*4 | GC-304*2 |

Scents:

- Pine





IMMACULATE CARPETS !



MULTI-PURPOSE CLEANER

Properties:

- It shows the highest performance in a small amount of use.
- A perfect balance between efficient cleaning and economy includes.
- It is suitable for skin pH.
- It is Fragrant.

| | | | |
|---------------------|------------|-------------|-------------|
| Volume (L) | 20 | 5 | 5 |
| Weight (kg) | 20,42 | 5,105 | 5,105 |
| Pcs-Box | 1 | 4 | 2 |
| Product Code | | | |
| Lavander Scent | GC-314-L20 | GC-314-L5*4 | GC-314-L5*2 |
| White Soap Scent | GC-314-W20 | GC-314-W5*4 | GC-314-W5*2 |
| Pure Scent | GC-314-P20 | GC-314-P5*4 | GC-314-P5*2 |



CARPET SHAMPOO FOAM

Properties:

- All natural and synthetic products that can be cleaned with carpet shampoos used in carpets.
- Removes stubborn and ingrained dirt without leaving any residue cleans and delays contamination.
- It does not contain optical whitening and bleaching agents.
- All shampooing and spray extraction equipment suitable. It can also be used with textile pads.

| | | | |
|---------------------|------------|-------------|-------------|
| Volume (L) | 20 | 5 | 5 |
| Weight (kg) | 20,42 | 5,105 | 5,105 |
| Pcs-Box | 1 | 4 | 2 |
| Product Code | | | |
| Lavander Scent | GC-315-L20 | GC-315-L5*4 | GC-315-L5*2 |
| White Soap Scent | GC-315-W20 | GC-315-W5*4 | GC-315-W5*2 |
| Pure Scent | GC-315-P20 | GC-315-P5*4 | GC-315-P5*2 |





CARPET SHAMPOO WITHOUT FOAM

Properties:

- All natural and synthetic products that can be cleaned with carpet shampoos used in carpets. The foam is controlled.
- Removes stubborn and ingrained dirt without leaving any residue. cleans and delays contamination.
- It does not contain optical whitening and bleaching agents.
- All shampooing and spray extraction equipmentsuitable. It can

| Volume (L) | 20 | 5 | 5 |
|------------------|------------|-------------|-------------|
| Weight (kg) | 20,42 | 5,105 | 5,105 |
| Pcs-Box | 1 | 4 | 2 |
| Product Code | | | |
| Lavander Scent | GC-316-L20 | GC-316-L5*4 | GC-316-L5*2 |
| White Soap Scent | GC-316-W20 | GC-316-W5*4 | GC-316-W5*2 |
| Pure Scent | GC-316-P20 | GC-316-P5*4 | GC-316-P5*2 |



CARPET SHAMPOO DRY FOAM

Properties:

- All natural and synthetic products that can be cleaned with carpet shampoos used in carpets.
- Removes stubborn and ingrained dirt without leaving any residue. Cleans and delays contamination.
- It does not contain optical whitening and bleaching agents.
- It is used with the machine.

| Volume (L) | 20 | 5 | 5 |
|------------------|------------|-------------|-------------|
| Weight (kg) | 20,42 | 5,105 | 5,105 |
| Pcs-Box | 1 | 4 | 2 |
| Product Code | | | |
| Lavander Scent | GC-317-L20 | GC-317-L5*4 | GC-317-L5*2 |
| White Soap Scent | GC-317-W20 | GC-317-W5*4 | GC-317-W5*2 |
| Pure Scent | GC-317-P20 | GC-317-P5*4 | GC-317-P5*2 |





LIME AND RUST REMOVER

Properties:

- Lime residues in water and acid resistant sanitary areas. It is used in cleaning and provides a hygienic effect.
- It is fragrant.
- Daily cleaning of ceramic and plastic parts of toilet bowls provides outstanding success.

| | | | |
|--------------|-----------|------------|------------|
| Volume (L) | 20 | 5 | 5 |
| Weight (kg) | 20,56 | 5,14 | 5,14 |
| Pcs-Box | 1 | 4 | 2 |
| Product Code | GC-318-20 | GC-318-5*4 | GC-318-5*2 |



STAIN REMOVER FOR CARPET

Properties:

- Removal of stains on carpet and textile surfaces used.
- Water-soluble and insoluble stains from carpets, made of upholstery fabrics, natural and synthetic fibers. Removes quickly and easily from textiles.
- It only takes a few minutes for it to take effect.

| | | | |
|--------------|-----------|------------|------------|
| Volume (L) | 20 | 5 | 5 |
| Weight (kg) | 20,5 | 5,225 | 5,225 |
| Pcs-Box | 1 | 4 | 2 |
| Product Code | GC-319-20 | GC-319-5*4 | GC-319-5*2 |

Scents:

- Special





BLEACH

Properties:

- Washing of white laundry at temperatures between 20-60°C and chlorine-based bleach auxiliary washing used for bleaching the item.
- Low cost thanks to its formula that provides effective stabilization. effective in doses.
- It does not create an unpleasant chlorine smell.
- Powerful dirt remover, bleach and high hygiene feature It is useful for cleaning and sanitizing heavily soiled surfaces.
- It should not be used with acidic products.

| | | | | |
|--------------|-----------|-----------|------------|------------|
| Volume (L) | 20 | 10 | 5 | 5 |
| Weight (kg) | 20,76 | 10,38 | 5,19 | 5,19 |
| Pcs-Box | 1 | 1 | 4 | 2 |
| Product Code | GC-312-20 | GC-312-10 | GC-312-5*4 | GC-312-5*2 |

Scents:

- Mountain Brezee



pH

0

7

14



Scents:

- Mountain Brezee

DENSE BLEACH

Properties:

- Provides hygiene on all water and alkali resistant surfaces.
- Mosaic with all fixtures in kitchen, bathroom and toilets, It can be used safely for cleaning ceramic, enamel and marble surfaces.
- All kinds of dirt and sun cosmetics caused by use. It easily removes the sticky dirt layers.
- It cleans the dirt settled in the joints.
- Thanks to its ultra-dense, thick consistency, it stays on vertical surfaces longer. clings, gives more effective results on dirt.
- To prevent bad odor by providing hygiene in the cleaned environment.obstacles.
- On heavily soiled surfaces thanks to its powerful dirt remover and bleaching feature.Provides cleanliness and hygiene.
- It should not be used with acidic products.

| | | | | |
|--------------|-----------|-----------|------------|------------|
| Volume (L) | 20 | 10 | 5 | 5 |
| Weight (kg) | 20,9 | 10,45 | 5,225 | 5,225 |
| Pcs-Box | 1 | 1 | 4 | 2 |
| Product Code | GC-313-20 | GC-313-10 | GC-313-5*4 | GC-313-5*2 |



pH

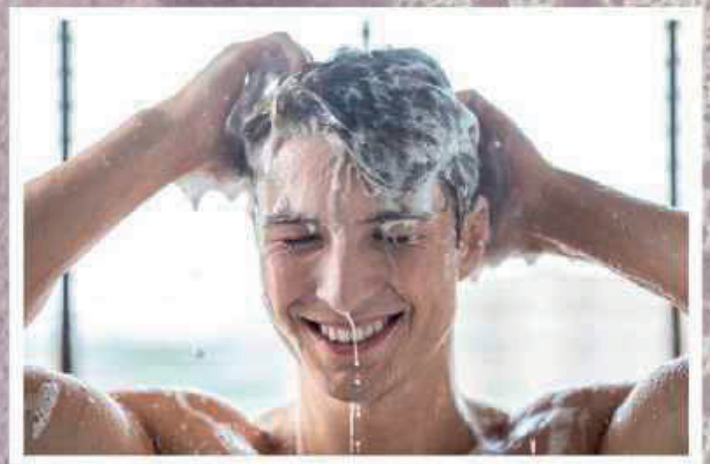
0

7

14



PERSONEL CARE PRODUCTS





FRAGRANT FOAM !



SHOWER GEL

Properties:

- Thanks to its soft formula, it cleans the skin without irritating, provides comfort.
- It is fragrant.
- Suitable for skin pH

| | | | |
|------------------|------------|-------------|-------------|
| Volume (L) | 20 | 5 | 5 |
| Weight (kg) | 20,80 | 5,20 | 5,20 |
| Pcs-Box | 1 | 4 | 2 |
| Product Code | | | |
| Chasmire Scent | PC-101-C20 | PC-101-C5*4 | PC-101-C5*2 |
| White Soap Scent | PC-101-W20 | PC-101-W5*4 | PC-101-W5*2 |



CREAMY LIQUID HAND SOAP

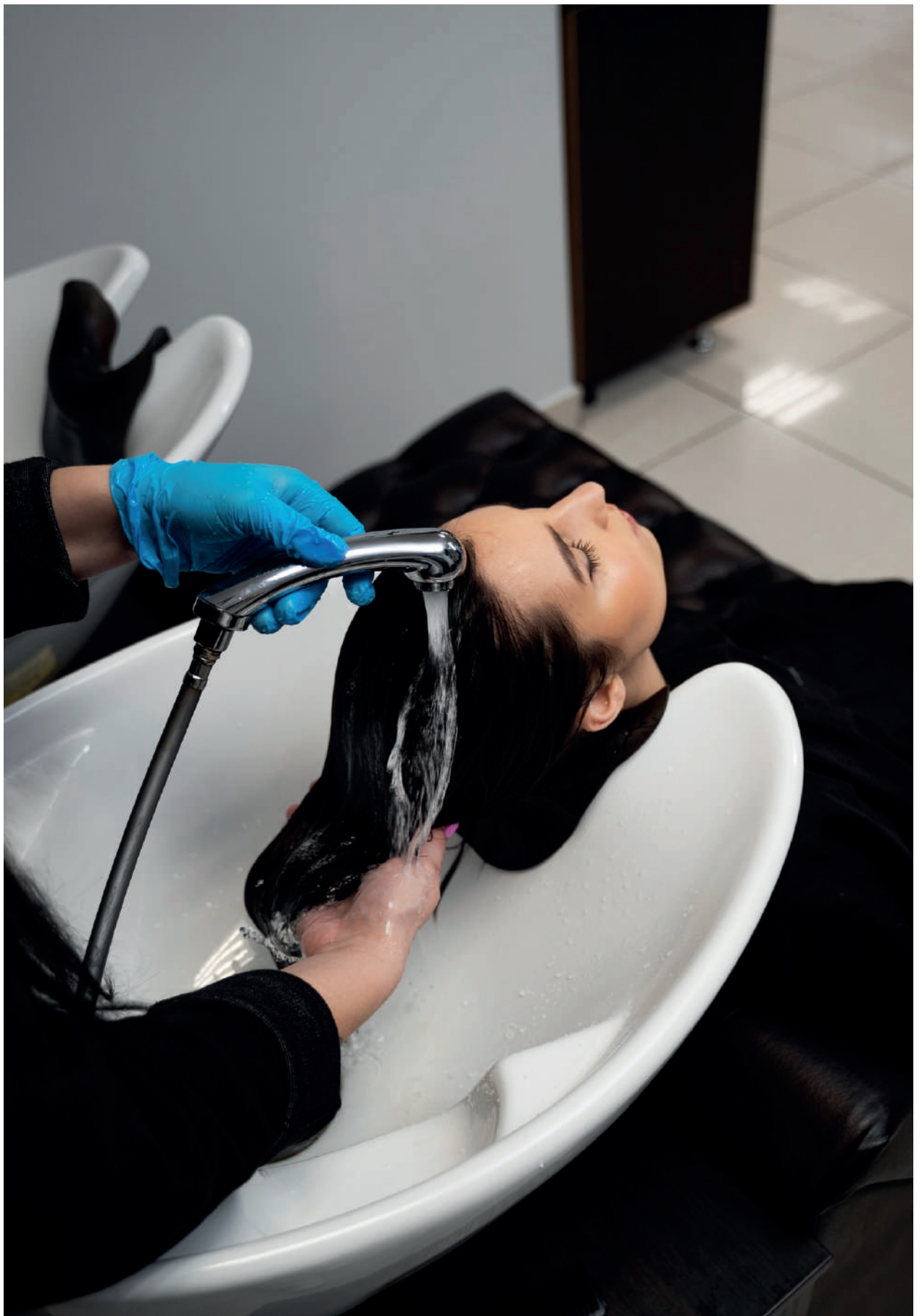
Properties:

- It is economical and ideal for general usage areas.
- It is fragrant.
- Thanks to its soft formula, it cleans the skin without irritating it.
- It is suitable for skin pH.

Used with dispensers.

| | | | |
|------------------|------------|-------------|-------------|
| Volume (L) | 20 | 5 | 5 |
| Weight (kg) | 20,58 | 5,145 | 5,145 |
| Pcs-Box | 1 | 4 | 2 |
| Product Code | | | |
| Chasmire Scent | PC-102-C20 | PC-102-C5*4 | PC-102-C5*2 |
| White Soap Scent | PC-102-W20 | PC-102-W5*4 | PC-102-W5*2 |





WAVY HAIR!



FOAM LIQUID HAND SOAP

Properties:

- It is economical with its abundant foam and saves water.
- Thanks to its soft formula, it cleans the skin without irritating it.
- It has a rich formulation that nourishes and protects the skin.
- It is suitable for skin pH.
- It is used with foam soap dispensers.

| | | | |
|---------------------|------------|-------------|-------------|
| Volume (L) | 20 | 5 | 5 |
| Weight (kg) | 20,10 | 5,025 | 5,025 |
| Pcs-Box | 1 | 4 | 2 |
| Product Code | | | |
| Chasmire Scent | PC-103-C20 | PC-103-C5*4 | PC-103-C5*2 |
| White Soap Scent | PC-103-W20 | PC-103-W5*4 | PC-103-W5*2 |



CREAMY HAIR SHAMPOO

Properties:

- It cleans the hair deeply, strengthens it and gives vitality to the hair gives.
- It has a pleasant smell and soft formula.
- Protects the scalp as it is suitable for skin pH

| | | | |
|---------------------|------------|-------------|-------------|
| Volume (L) | 20 | 5 | 5 |
| Weight (kg) | 20,80 | 5,20 | 5,20 |
| Pcs-Box | 1 | 4 | 2 |
| Product Code | | | |
| Chasmire Scent | PC-104-C20 | PC-104-C5*4 | PC-104-C5*2 |
| White Soap Scent | PC-104-W20 | PC-104-W5*4 | PC-104-W5*2 |

Scents:

- Chasmire
- White Soap





LAUNDRY CLEANING PRODUCTS



LIQUID LAUNDRY DETERGENT FOR COLOR WITH ENZYME



Properties:

- It is a main washing detergent that does not contain bleach.
- It is not used for washing delicate textiles such as wool and silk.
- It is effective at any water temperature.
- It is used with liquid system dosing pumps and hand dosing.

| | | |
|--------------|------------|------------|
| Volume (L) | 5 | 5 |
| Weight (kg) | 5,2 | 5,2 |
| Pcs-Box | 4 | 2 |
| Product Code | LD-201-5*4 | LD-201-5*2 |

Scents:

- Floral



LIQUID LAUNDRY DETERGENT GENERAL USE WITH ENZYME



Properties:

- All kinds of cotton, synthetic and cotton-synthetic blends
- It is used for washing textiles. Contains enzyme.
- It is a main washing detergent that does not contain bleach.
- It can also be used safely in colored laundry.
- It is not used for washing delicate textiles such as wool and silk.
- It is effective at any water temperature.
- Used with liquid system dosing pumps.

| | | |
|--------------|------------|------------|
| Volume (L) | 5 | 5 |
| Weight (kg) | 5,2 | 5,2 |
| Pcs-Box | 4 | 2 |
| Product Code | LD-202-5*4 | LD-202-5*2 |

Scents:

- Floral





SMELLY LAUNDRY !

FABRIC SOFTNER

Properties:

- 1/3 of normal softeners due to its concentration until used.
- It gives softness to the laundry, prevents them from drying and It makes ironing easier, without getting wrinkled from the washing machine lets them out.
- Storage and cost savings thanks to its concentrated structure provides.



| | | |
|--------------|------------|------------|
| Volume (L) | 5 | 5 |
| Weight (kg) | 5,2 | 5,2 |
| Pcs-Box | 4 | 2 |
| Product Code | LD-203-5*4 | LD-203-5*2 |

Scents:

- Mixed



ROOM AND LAUNDRY PERFUME

Properties:

- By spraying directly on textile surfaces applicable.
- It is used to remove irritating odors.
- It leaves a permanent, pleasant and fresh scent in the environments where it is applied.



| | | |
|---------------------|--------------|--------------|
| Volume (L) | 5 | 5 |
| Weight (kg) | 5 | 5 |
| Pcs-Box | 4 | 2 |
| Product Code | | |
| Lavander Scents | LD-204-LV5*4 | LD-204-LV5*2 |
| Chasmire Scents | LD-204-C5*4 | LD-204-C5*2 |
| Legend Scents | LD-204-LG5*4 | LD-204-LG5*2 |
| Spring Scents | LD-204-S5*4 | LD-204-S5*2 |

Scents:

- Lavander
- Chasmire
- Legend
- Spring



CAR CARE PRODUCTS





BRUSHLESS CAR WASH

Properties:

- It is suitable for cleaning all kinds of metallic and matte painted vehicles.
- With its Bol Foam, it provides a good cleaning and shine without scratching.
- Extends the life of your vehicle's paint.

| | | | |
|--------------|-----------|------------|------------|
| Volume (L) | 20 | 5 | 5 |
| Weight (kg) | 20 | 5 | 5 |
| Pcs-Box | 1 | 4 | 2 |
| Product Code | CC-101-20 | CC-101-5*4 | CC-101-5*2 |



POLISHED BRUSHLESS CAR WASH

Properties:

- It cleans the dirt on the vehicle with its abundant foam without scratching it.
- By creating a film layer on the vehicle, it provides a more vivid and bright appearance.
- Extends the life of your vehicle's paint.

| | | | |
|--------------|-----------|------------|------------|
| Volume (L) | 20 | 5 | 5 |
| Weight (kg) | 20 | 5 | 5 |
| Pcs-Box | 1 | 4 | 2 |
| Product Code | CC-102-20 | CC-102-5*4 | CC-102-5*2 |





MARKET PRODUCTS



LIQUID LAUNDRY DETERGENT



Product Code : LD-202-2,5

LIQUID LAUNDRY DETERGENT



Product Code : LD-201-2,5

FABRIC SOFTENER



Product Code : LD-203-2

GENERAL CLEANER



Product Code : GC-301-1

GLASS AND WINDOW SURFACE CLEANER



Product Code : GC-304-0,75

BATHROOM SHOWER TUB AND FAUCET CLEANER



Product Code : GC-310-0,75

OVEN AND GRILL CLEANER



Product Code : KC-103-0,75

DEGREASER CLEANER



Product Code : KC-102-0,75

WC & BATHROOM CLEANER DENSE



Product Code : GC-309-0,75

DISHWASHING



Product Code : KC-101-G075

ALL PURPOSE CLEANER



Product Code : GC-314-1

ULTRA BLEACH



Product Code : GC-313-0,8



CETSA COSMETIC PACKAGING FOOD AND ANIMAL HUSBANDRY LIMITED COMPANY

CENTER OFFICE : İkitelli Organized Industrial Zone Ataturk Boulevard No : 98 Puffa Plaza Office No : 106
BASAKSEHIR / ISTANBUL

PRODUCTION FACILITY : Kırklareli Organized Industrial Zone 2. Street A Block No:3 Kızılıcdere/KIRKLARELİ
web: www.cetsagroup.com
e-mail: info@cetsagroup.com